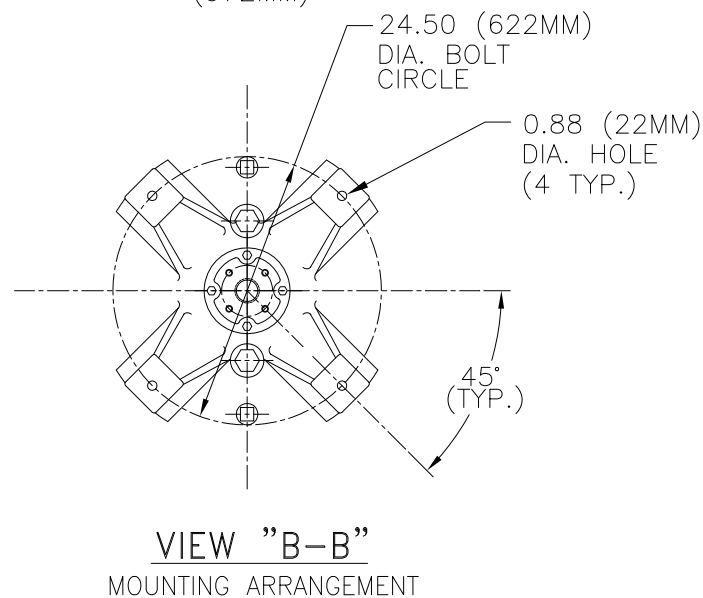
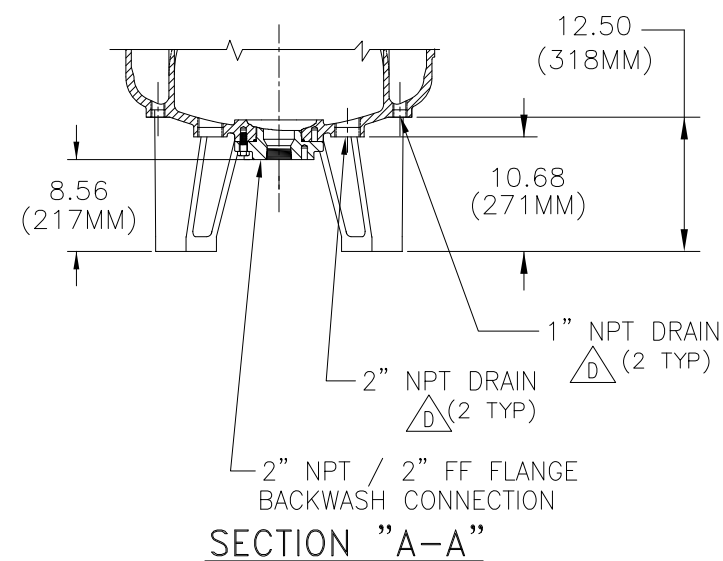
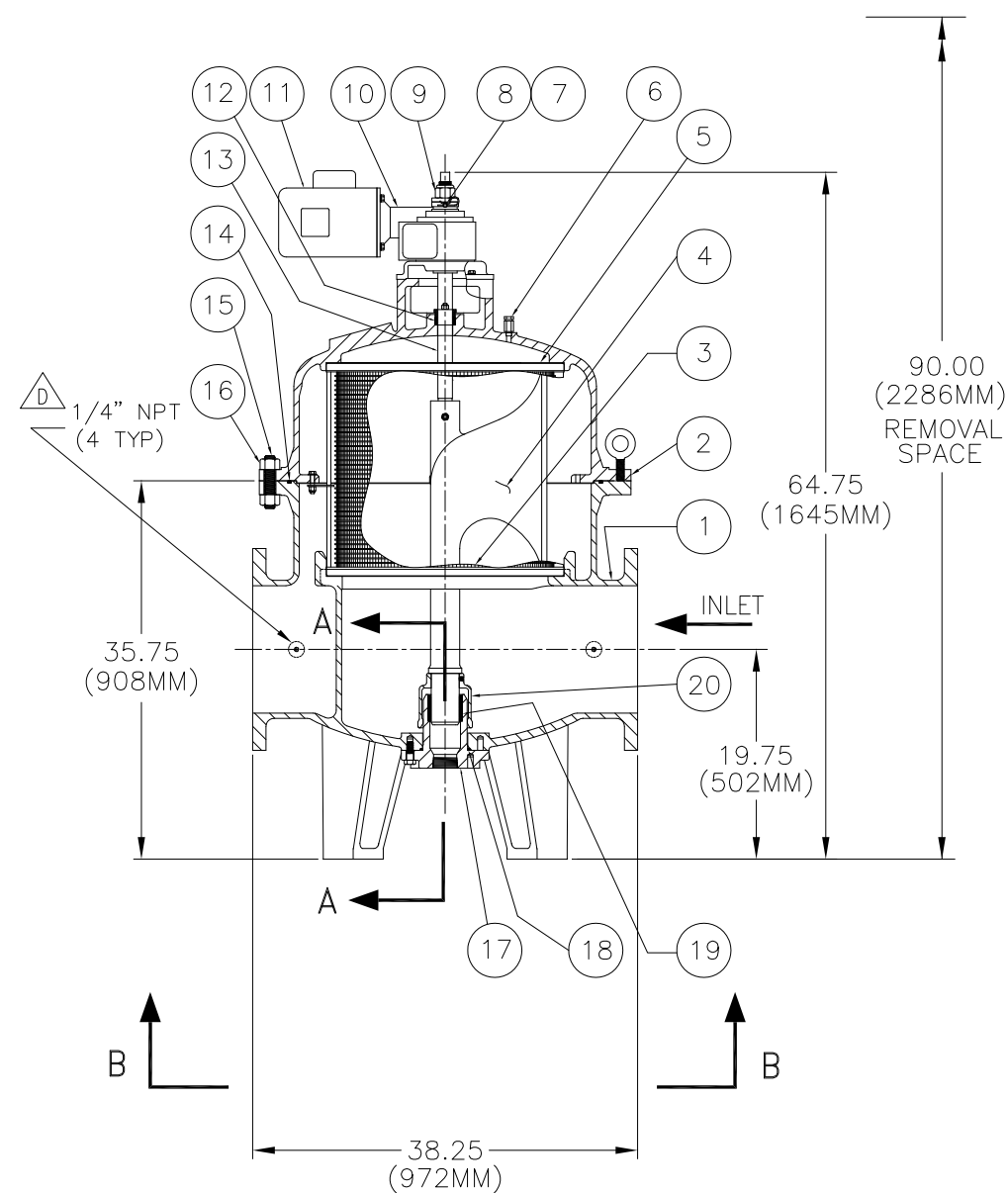


REVISIONS

| REV | DESCRIPTION | BY | ECO | DATE |
|-----|---|----|---------|----------|
| D | UPDATE TITLE BLOCK ADD DRAINS,19 WAS DELRIN | JJ | 0084310 | 4/5/2013 |



NOTES:

1. ALL FLANGE CONNECTIONS CONFORM TO ANSI B16.42.
2. FOR REPLACEMENT PARTS, MODEL NO., SIZE, AND SERIAL NO., FROM THE STRAINER NAMEPLATE MUST BE FURNISHED.
3. DESIGN CONDITIONS: 150 PSI @ 150° F (10.3 BAR @ 65.5° C)
4. WEIGHT: DRY-1840 LBS. (836 KGS.)
WET-2615 LBS. (1189 KGS.)
COVER WEIGHT: 705 (320 KGS.)
5. THIS UNIT IS DESIGNED AND STAMPED IN ACCORDANCE WITH THE CURRENT ASME SECTION VIII, DIV.1 PRESSURE VESSEL CODE WITH THE CURRENT ADDENDA.
6. MDMT: -20°F. @ 150 PSI

| NO. | PART NAME | MATERIAL |
|-----|-----------------------|-------------------------|
| 1 | BODY | DUCTILE IRON SA 395 |
| 2 | COVER | DUCTILE IRON SA 395 |
| 3 | ELEMENT | STAINLESS STEEL |
| 4 | BACKWASH ARM | DUCTILE IRON ASTM A 395 |
| 5 | GASKET | BUNA-N |
| 6 | VENT VALVE 1/4" NPT | BRASS |
| 7 | COTTER PIN | STEEL |
| 8 | DRIVE PIN | STAINLESS STEEL |
| 9 | ELASTIC STOP NUT | STAINLESS STEEL |
| 10 | GEAR REDUCER | CAST IRON |
| 11 | MOTOR - 1/4 HP | --- |
| 12 | QUAD SEAL | BUNA |
| 13 | BACKWASH SHAFT | STAINLESS STEEL |
| 14 | O-RING | BUNA-N |
| 15 | STUD | SA 193 GR.B7 - CSTL |
| 16 | HEX NUT | SA 194 GR.2H - CSTL |
| 17 | PILOT BUSHING HOUSING | DUCTILE IRON SA 395 |
| 18 | O-RING | BUNA-N |
| 19 | PILOT BUSHING | COMPOSITE |
| 20 | BACKWASH ARM GUIDE | DUCTILE IRON ASTM A 395 |

TOLERANCES (UNLESS OTHERWISE SPECIFIED)

| | |
|--------------------|--|
| DECIMAL: | .X ± .030 .XX ± .010 .XXX ± .005 |
| FRACTIONAL: | ± 1/16 |
| NOZZLE Q TO FLOOR: | 3/8" < 4' > 1/4" |
| FACE TO FACE: | 3/8" < 4' > 1/4" |
| ANGULAR: | ± 1' |
| FLANGES (H/V): | ± 1/2" |
| VESSEL OVERALL HT: | ± 1" |

BOLT HOLES MUST STRADDLE Q
MACHINED PARTS TO BE FREE OF BURRS
FOR ADDITIONAL TOLERANCE DETAILS
REF. ES-211, ES-222 AND ES-223
REVIEWED FOR CLASSIFICATION PER PR-4

CRITICAL SIGNIFICANT

| | | | | | |
|---------------------------|-------------|---|-----------|--------------------------|----------|
| DRAWN BY FC | | EATON EATON FILTRATION, LLC DESIGN CENTER TINTON FALLS, NEW JERSEY, USA • PORTAGE, MICHIGAN, USA | | | |
| SCALE AS DRAWN | | | | | |
| RESTRICTION RESTRICTED | | TITLE MODEL 2596 SELF-CLEANING STRAINER SIZE 12" 150# FF FLANGE DUCTILE IRON | | | |
| SHEET 1 OF 1 | | DATE 6/22/00 | SIZE B | DWG FILENAME SD259661 | REV D |
| PROJECTION THIRD ANGLE | | <small>EATON CORPORATION - CONFIDENTIAL AND PROPRIETARY NOTICE TO PERSONS RECEIVING THIS DRAWING AND/OR TECHNICAL INFORMATION THIS DOCUMENT, INCLUDING THE DRAWING AND INFORMATION CONTAINED THEREON IS CONFIDENTIAL AND IS THE EXCLUSIVE PROPERTY OF EATON AT ANY TIME. BY TAKING THE POSSESSION OF THIS DOCUMENT THE RECIPIENT ACKNOWLEDGES AND AGREES THAT THIS DOCUMENT CANNOT BE USED IN ANY MANNER ADVERSE TO THE INTEREST OF EATON AND THAT NO PORTION OF THIS DRAWING MAY BE COPIED OR OTHERWISE REPRODUCED WITHOUT THE PRIOR WRITTEN CONSENT OF EATON, IN THE CASE OF CONFLICTING CONTRACTUAL PROVISIONS, THIS NOTICE SHALL GOVERN THE STATUS OF THIS DOCUMENT. 2013 EATON CORPORATION - ALL RIGHTS RESERVED.</small> | | | |
| CUSTOMER INFO | | | | | |
| NAME | | | | | |
| P.O. NO. | | | | | |
| TAG NO. | | | | | |
| S.O. NO. | | | | | |
| PART NO. | 25961000719 | | | | |